



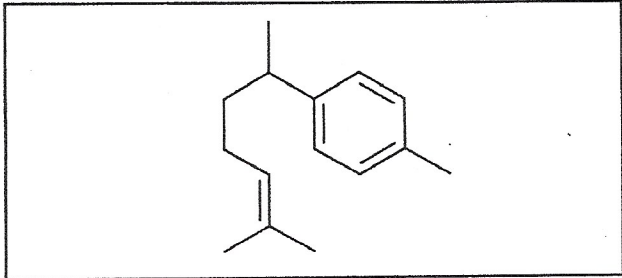
INDOFINE Chemical Company, Inc.

121 Stryker Lane, Bldg. 30
Hillsborough, NJ 08844 USA
Phone: (908) 359-6778; Fax: (908) 359-1179

Certificate Of Analysis

025225S **α-CURCUMENE** **Lot No.: 22072304**

CAS RN	644-30-4
MOL FORMULA	C ₁₅ H ₂₂
MOL WEIGHT	202,34

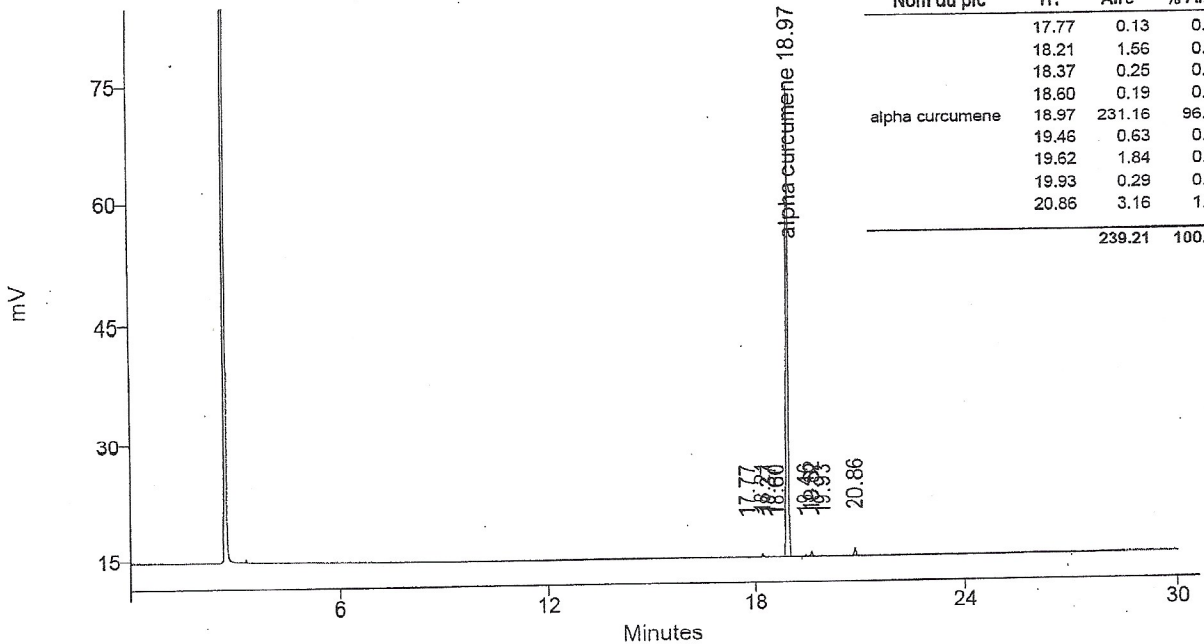


TEST	METHOD	UNIT	SPECIFICATION	RESULT
Appearance	Visual		Liquid	Conform
Water content	KF	% w/w		< 0,2
Residual solvents	GC-HS	% w/w		0,8
Assay	GC	% area	≥ 90,0	96,6

GC CHROMATOGRAM

Column : DB5 capillary 30m x 0,32mm x 0,25µm
 Temperature : Column 70 to 220°C (5°C/min)
 Injector 200°C, Detector 230°C
 Detector : FID

Carrier gas : Helium 1ml/min
 Split : 1/20
 Injection volume : 0,5 µl
 Injection solvent : Isopropanol



LONG TERM STORAGE : Below -15°C in a dry and dark place

TRANSPORT CONDITIONS : Ambient temperature